

Windows 2000 workstations:

Reminders: Yes

By default, Windows 2000 will remind you to change your password starting 14 days before the expiration date. You will receive a message at logon similar to this:

Your password will expire in XX days. Do you want to change it now?

Automatically prompt you to change an expired password: Yes

If you fail to change your password before the expiration date you will receive the following error and be forced to change it before it allows you to log on.

Your password has expired and must be changed.

Error message if password does not conform to policy: Yes

If you try to type a password that does not conform to our policy, you will receive an error message stating the following:

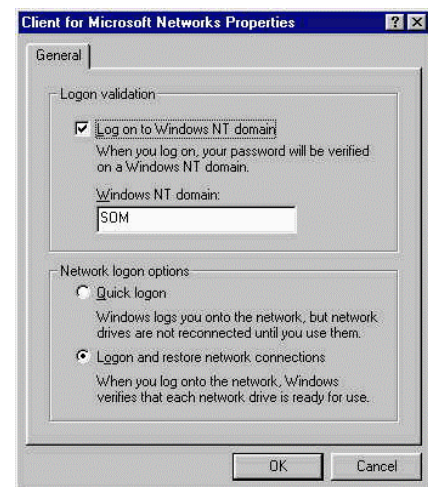
Your password must be at least 6 characters and cannot repeat any of your previous 8 passwords. Please type a different password. Type a password which meets these requirements in both text boxes.

Windows 98 workstations:

Reminders: Yes *

Many Windows 98 machines are set to log on to network shares only when first accessed. This is called "Quick logon". Unfortunately, Quick logon will not prompt you to change your password when it has expired, nor will it prompt you to change it when the expiration date is approaching. Under the **Client for Microsoft Networking** properties, change your setting to **Logon and restore network connections** to make sure you are prompted to change your password at logon.

By default, Windows 98 will remind you to change your password 6 days ahead of the expiration date.



Automatically prompt you to change an expired password: Yes*

See above.

Error message if password does not conform to policy: Yes

If you try to change your password to something that does not conform to our policy, you will receive this error.



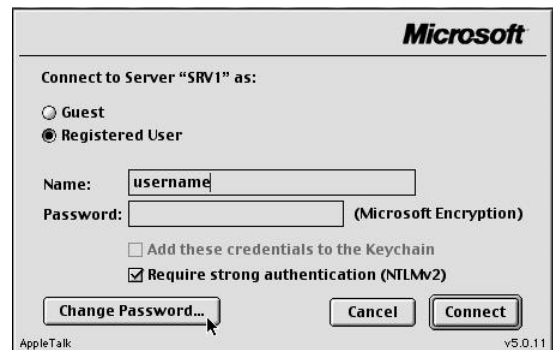
Macintosh workstations (OS9x):

Reminders: No

Macintosh users will not receive any warning that their passwords are about to expire. It is up to the user to keep track of the dates on which their passwords need to be changed. Users will receive an error on the day of expiration

Automatically prompt you to change an expired password: Yes *

On the day of expiration, a Mac user will be prompted to change their password. *However, we have not been able to change the password on expiration in our test lab.* A Mac user should change their password *before* the expiration date via the MSUAM.



Error message if password does not conform to policy: Yes

Mac will inform the user of a bad password using this vague error message.



*Refer to your departmental CSC if you have any problems or questions regarding your Macintosh.

POP3 (Eudora v5.1)

Reminders: No

Eudora (and other POP3 client users) will need to keep track of their expiration dates. Eudora will not give any warning that the password is about to expire. On the day of expiration, you will

receive an error stating that the password has expired, similar to the image below.



Automatically prompt you to change an expired password: No

You can change your POP3 account password through Eudora under the *Special, Change Password* menu item before the expiration date.

Error message if password does not conform to policy: No

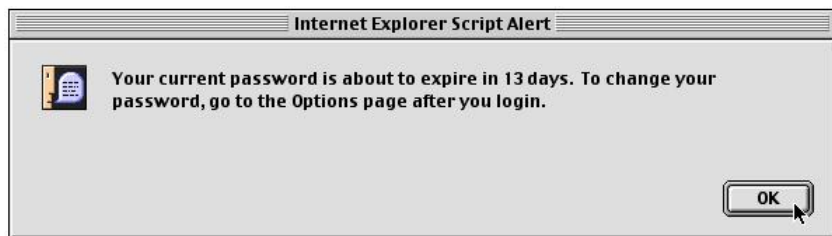
Eudora will only alert you to the fact that you cannot log onto the server.

*Refer to your departmental CSC if you have any questions regarding your POP3 mail client.

Outlook Web Access (OWA): A last resort

Reminders: Yes

When you log onto <https://somowa.ucsf.edu> starting 13 days before expiration.



Automatically prompt you to change an expired password: Yes



Error message if password does not conform to policy: Yes

